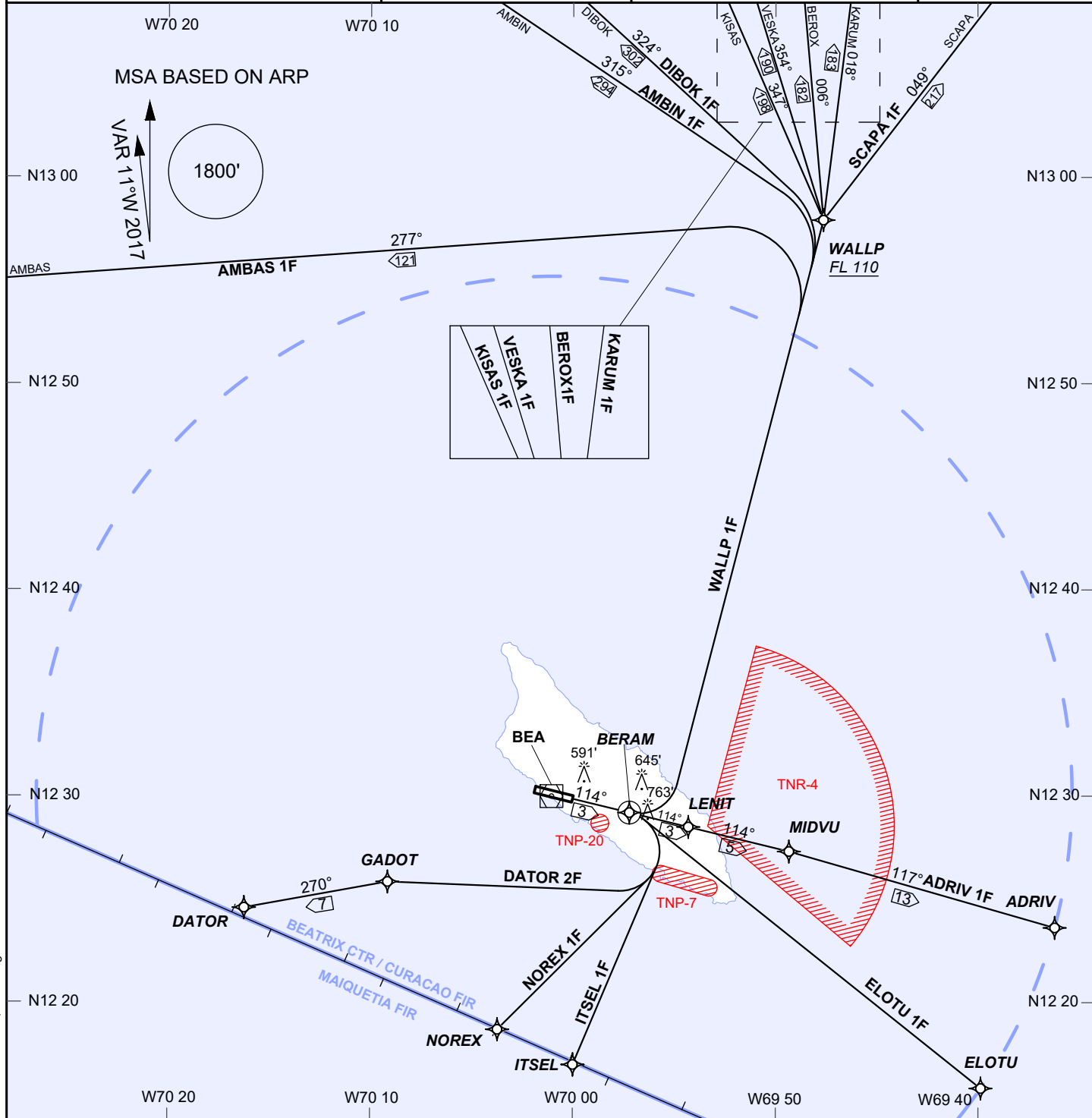


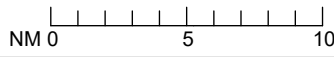
AIP DUTCH CARIBBEAN

RNAV (GNSS) DEPARTURES RWY 11 INSTRUMENT	AD ELEVATION: 62'	BEATRIX:	REINA BEATRIX
	TRANS LEVEL: FL 40	TWR 118.0 APP 120.9	INT'L (TNCA)
	TRANS ALT: 2500' (2438')	APRON 121.6 ATIS 132.1	ARUBA



1. RNAV 1, GNSS required.
2. BEA VOR declination 11°W.
3. All SIDs require minimum 255 fpm until 1100'.
4. WALLP 1F: After passing WALLP, expect ATC instructions to first en-route waypoint.
5. Altitudes, elevations and heights in feet, distances in nautical miles, bearings are magnetic.
6. Advise ATC if unable to climb above TNR-4 ceiling prior to crossing boundary.

ICAO SID DESIGNATORS		TNP-7	GND - 2500'
ADRIV 1F	ITSEL 1F	TNR-4	SFC-by NOTAM
AMBAS 1F	KARUM 1F	TNP-20	GND - 2500'
AMBIN 1F	KISAS 1F		
BEROX 1F	NOREX 1F		
DATOR 2F	SCAPA 1F		
DIBOK 1F	VESKA 1F		
ELOTU 1F	WALLP 1F		



CHANGES: altitude restriction at GADOT removed; SID designator DATOR 1F renamed DATOR 2F.